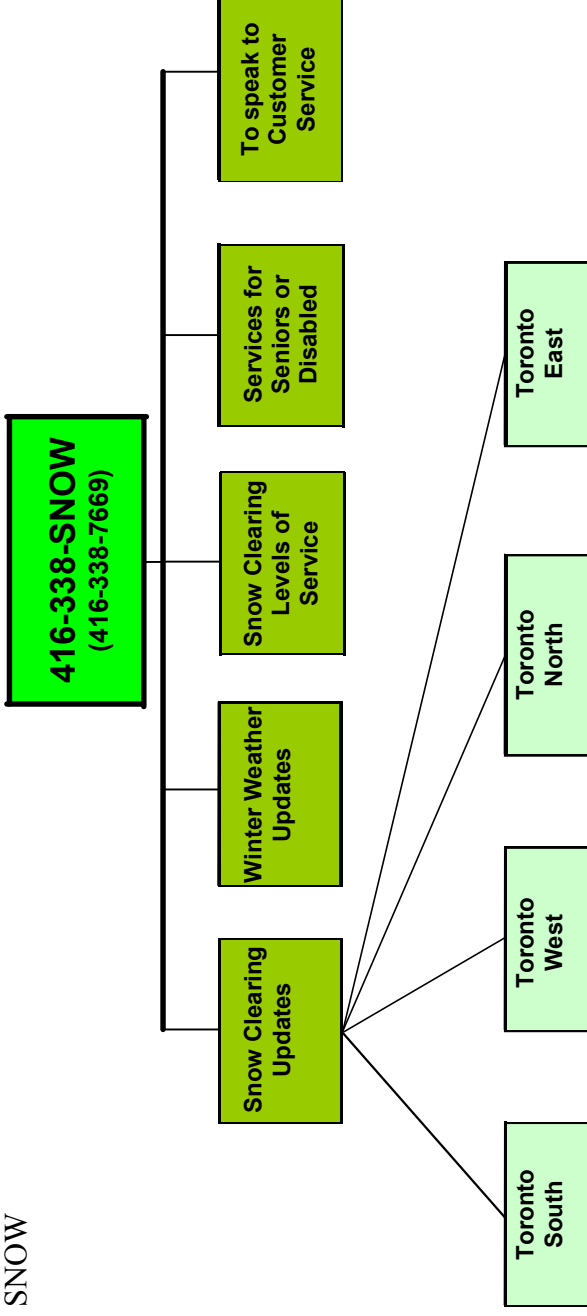


# 3-1-1 OR 338-SNOW MENU

SNOW



# WINTER ROADS INFORMATION



## TRANSPORTATION SERVICES

**3-1-1**  
**OR**  
**416-338-SNOW**

### Winter Vehicle Tips From Transportation Services

#### Always check the following:

- vehicle battery condition and terminals
- windshield wipers and washer fluid levels
- coolant system and oil levels
- exterior lights and turn signals
- tire wear and tire pressure

#### Other things to do:

- keep your vehicle's gas tank at least half full
- start the engine block heater several hours before driving
- completely clear your vehicle of snow and ice, including the windows, mirrors, roof, trunk, hood and lights.
- start your car at least one minute before you drive

## TRANSPORTATION SERVICES

**3-1-1**  
**OR**  
**416-338-SNOW**